

How to: Log into the NFRA Portal

For first time log-in only,
just click
“Forgot Password”.



Log-in to the NFRA Member Portal

New to this site?

If you are new to this system or not sure if you've used this site before, enter your information below and click Sign Up.

Sign in with your username/email and password

Username

[Forgot your username?](#)

Password

[Forgot your password?](#)

By signing in, I agree to the [Privacy Policy](#) and [Terms of Service](#).

Sign In

Need an account ? [Sign Up](#)

Enter the email address on file with NFRA and click **“Reset My Password”**.



Forgot your password?

Enter your Username below and we will send a message to reset your password

Reset my password

[Back to Sign In](#)

A code will be sent to the email address you entered. If you do not see it within a minute or so, check your Spam.

NFRA Portal Verification code



no-reply@verificationemail.com
To Sarah Thompson

Your verification code to continue setting up an account on the National Frozen & Refrigerated Foods Portal is: 306628.



We have sent a password reset code by email to s***@n***.org Enter it below to reset your password.

Code*

New Password*

Enter New Password Again*

- ✘ Password must be at least 8 characters.
- ✘ Password must contain at least 1 number.
- ✘ Password must contain at least 1 uppercase letter.
- ✘ Password must contain at least 1 lowercase letter.
- ✘ Password must contain at least 1 Special Character from the following list:
(^\$*.[\{\}\(\)\?-\!"@#%&/\,><'";|_~`)

Change Password

[Back to Sign In](#)

Type the code and your new password, confirm the new password, and click **“Change Password”**.

Password criteria will disappear as they are met.

When the two passwords match, **“Change Password”** will turn blue.



We have sent a password reset code by email to s***@n***.org Enter it below to reset your password.

Code*

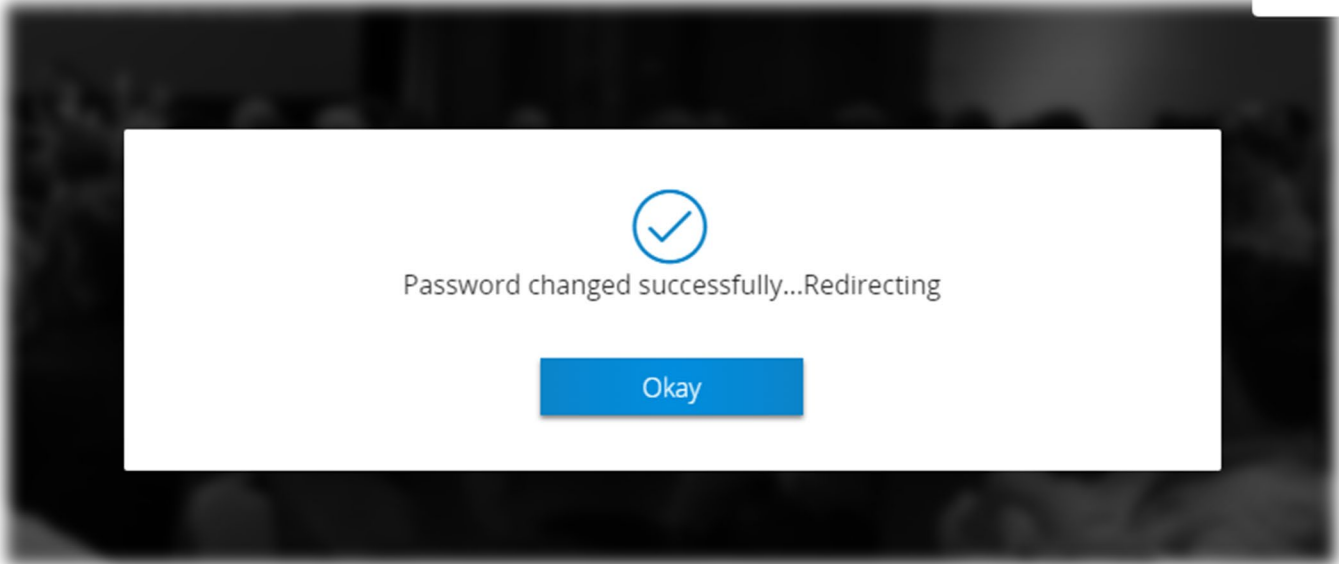
New Password*

Enter New Password Again*

Change Password

[Back to Sign In](#)

Click **Okay** on the redirect notice, and you will be automatically logged in and directed to the NFRA Portal home page.



This is the home page once you are logged into the NFRA Portal



[Home](#)

[Community](#)

[Register](#)

[Advertise](#)

[Member Resources](#)

[NFRA Data Dashboard](#)



Featured

 [My Event Registrations \(6\)](#)

[2021 NFRA Convention](#)